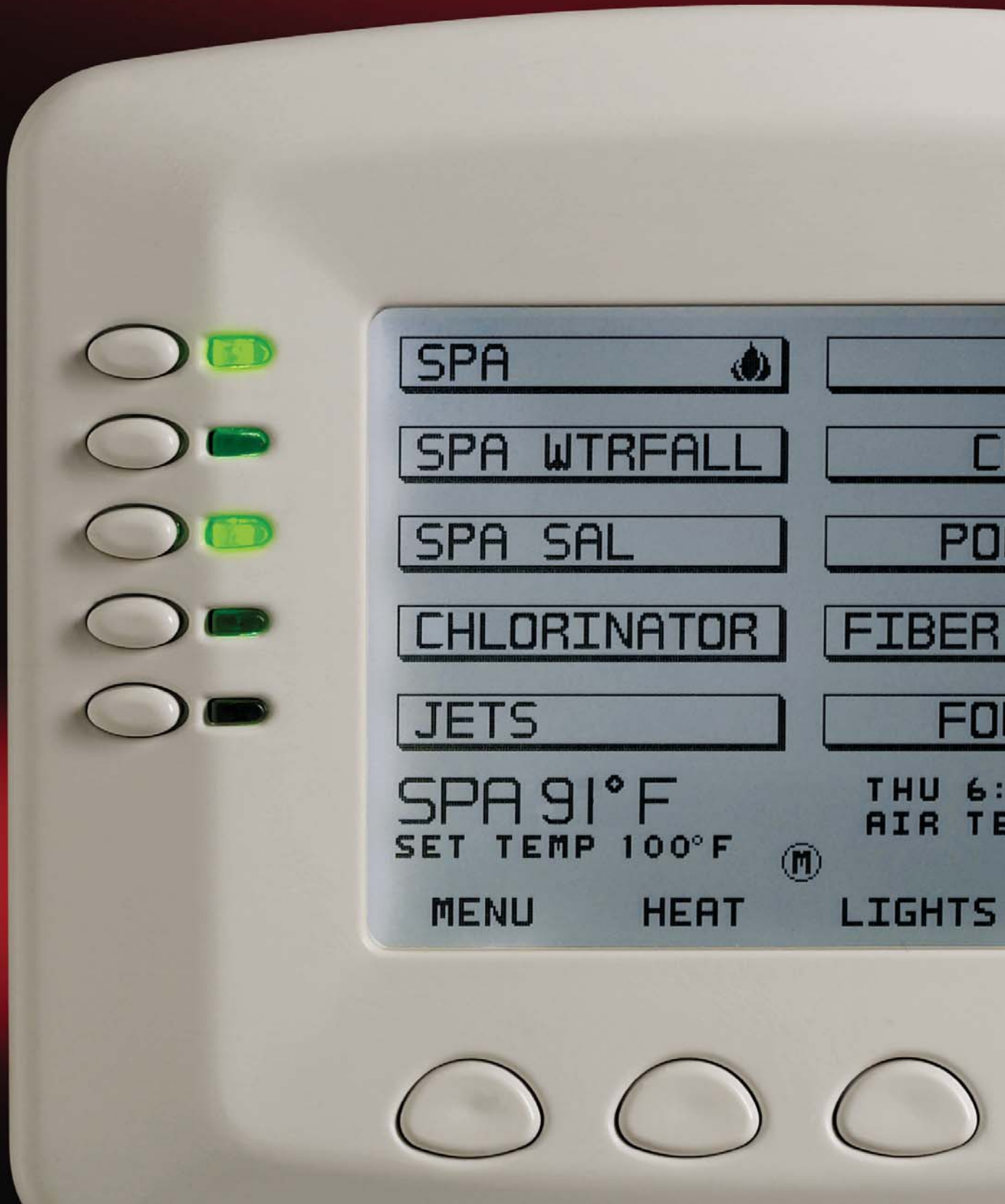


IntelliTouch[®]

Pool and Spa Control Systems
By Pentair Water Pool and Spa[®]



Smart and Simple Pool and Spa Automation



IntelliTouch®

Pool and Spa Control Systems



Simple, convenient, flexible and expandable... the truly intelligent pool and spa control system

An IntelliTouch® control system takes the work and worry out of scheduling and operating pool and spa heating, filtration and cleaning cycles. It also gives you one-touch control over additional heaters, valves, pool lights, landscape lights, water features and more. At the same time, IntelliTouch makes sure all your equipment operates at peak efficiency for minimum energy usage and cost. It even helps protect your equipment investment. IntelliTouch senses conditions that could hamper operation and alerts you to these situations or takes automatic corrective action.

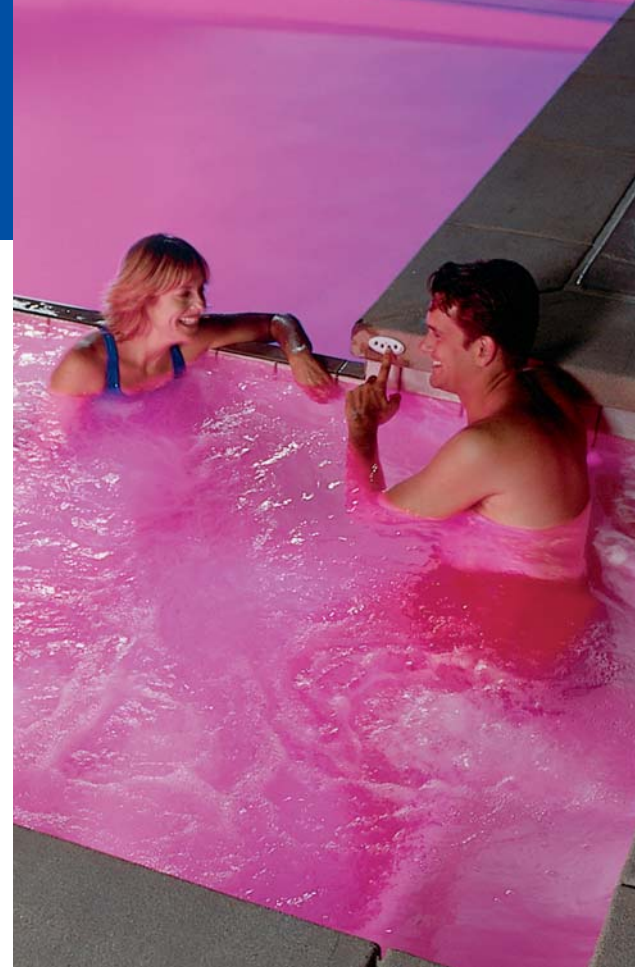
“Simple” really means simple

A basic IntelliTouch® system involves just three key elements

- **First** is the power center installed at your pool equipment pad that contains all the electrical circuitry.
- **Second** is one of the “personality kits” you select based on whether you want to control a separate pool or spa, a pool/spa combination with shared equipment, or a pool/spa combination with separate equipment. Your personality kit determines the type and number of equipment and accessories you will control.
- **Third** is your system controller: select from an indoor wall-mounted unit, MobileTouch® wireless controller, our new ScreenLogic® Digital Tablet, In-wall Touch Screen, Pocket PC, or Standard PC interfaces.

Now, for all its technical sophistication and range of control capabilities, IntelliTouch is very simple to program and simple to use. And that's what sets it apart from the others.

Just follow the step-by-step, menu-driven instructions on your controller. There are no complicated routines to learn or remember. You can quickly and easily change equipment and accessory operating schedules to better match your usage habits, your busy schedule, and seasonal changes while assuring good maintenance practices. We designed it to make your life simpler...push-button simple.



Four-function spa-side remote controls additional items, such as jets, air blower, and heater – without leaving the water.

In-Wall Touch Screen



Indoor Control Panel



Pocket PC



MobileTouch® Wireless Remote



Wireless Digital Tablet



Photo shows range of control devices available to interface with your IntelliTouch system – wired, wireless, push-button or touchscreen – all are extremely easy to use.

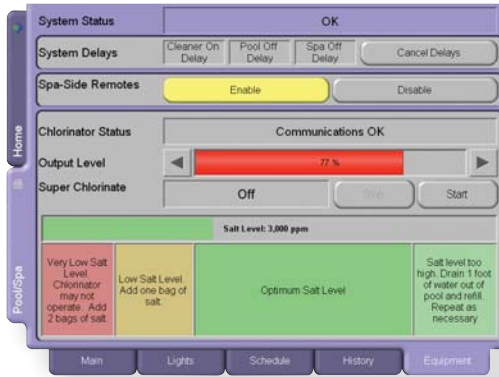
Now, add up the benefits of backyard automation

Besides making equipment and accessory operation simpler and more convenient, an IntelliTouch system is an investment that can pay you back in important, other ways.

IntelliTouch® saves you money

Pinpoint control over equipment operating schedules saves money three ways.

- **First**, count-down timers save you money by turning equipment on and off. For example, overall filtration time can be reduced by programming several shorter cycles rather than one longer cycle. Plus, you can take advantage of off-peak electrical rates, when available. And no more worries about leaving pool or landscape lighting on longer than you planned.
- **Second**, by only running equipment and accessories as much as needed to keep your pool and/or spa in top condition, you prolong the life of your equipment.
- **Third**, with IntelliTouch you can also control money-saving two-speed pumps and solar heating systems.



ScreenLogic® touch screen display provides simple commands and status messages. Sample screen shows status of IntelliChlor® automatic chlorine generator.

Built-in sensors protect your investment as well

- IntelliTouch includes a sensor that automatically turns on your pump(s) if freezing conditions are detected.
- For those with “pressure-side” cleaners that use a booster pump, an automatic pool cleaner lock-out feature prohibits the pump from operating without a water feed when your system is in spa mode.
- IntelliTouch also alerts you to any problems it may be having and tells you when service is needed.

Now that's intelligence...and your ticket to greater pool and spa enjoyment with less work or worry.





IntelliTouch® makes pool service simpler, too



You don't need to be home to greet a maintenance technician when IntelliTouch® is on the job. Your service person can put the system into "service" mode and run all programs from the power center outside your home. The "time out" mode allows programs to be interrupted and automatically resumed so you don't have to worry about reprogramming. In short, IntelliTouch helps service technicians do a better job of keeping your equipment in top condition with no need for your involvement.

IntelliTouch® is easy to expand as you add features

The capabilities of IntelliTouch are easily expanded as you continue to add features to your backyard retreat. Expansion kits add control over five or ten additional accessories. Up to three expansion kits can be combined to control up to 40 separate pieces of equipment.



Photo shows control panel and enclosure for i10X expansion kit, which is typically installed next to your original power center.

IntelliTouch®

System Selections and Options



There is an IntelliTouch® system for every application—pool, spa, pool and spa combinations, and pools with separate spas. With the ability to control from five to forty functions, total backyard automation is achievable with IntelliTouch.

The table on the next page shows the standard and optional capabilities of the six IntelliTouch systems and two expansion kits in the family.

IntelliTouch also offers you a number of individual and multiple wired and wireless control devices for the ultimate in freedom and flexibility.

Four-function spa-side remote



- Installs in spa deck or tile.
- Controls any four items such as spa, jets, spa lights or pool lights.
- L.E.D. lamp indicates Heating and Spa modes.

Ten-function spa-side remote



- Installs in spa deck or tile, semi-flush or surface-mounted.
- Controls any ten items such as spa, jets, spa lights, pool lights, air blower, fiber optic lighting, colored lighting wheels, water features, etc.
- Thermostatic temperature control.
- L.E.D. indicators for all buttons.

Handheld wireless remote



- Controls any four items/functions such as spa, jets, spa lights and pool lights.

ScreenLogic® interfaces



Totally unique, ScreenLogic® interfaces allow programming and operation of IntelliTouch systems from one, or a combination of Pocket PCs, Digital Tablet, PCs or In-Wall Touch Screens. You access color touch screens that are one-command simple from devices that provide e-mail, web access and other digital capabilities, as well as automation of your backyard retreat.

The Family of IntelliTouch® Systems



There is an IntelliTouch® system for every application—swimming pools, pool and spa combinations, custom spas, and pools with separate spas. With control circuits from five to forty and beyond, there's no project too large or too small for IntelliTouch.

Systems and Features

	IntelliTouch i5+3 Pool/Spa Combo	IntelliTouch i7+3 Pool/Spa Combo	IntelliTouch i9+3 Pool/Spa Combo	IntelliTouch i5+3S Pool or Spa	IntelliTouch i9+3S Pool or Spa	IntelliTouch i10+3D Pool/Spa w/dual equip.	IntelliTouch i5X Expansion Center	IntelliTouch i10X Expansion Center
Filter pump control	S	S	S	S	S	S	N/A	N/A
Pool/Spa control of 2 motorized valves	S	S	S	N	N	N	N/A	N/A
Digital thermostatic heater control	S	S	S	S	S	S	N/A	N/A
Aux 1 control circuit	S	S	S	S	S	S	S	S
Aux 2 control circuit	S	S	S	S	S	S	S	S
Aux 3 control circuit	S	S	S	S	S	S	S	S
Aux 4 control circuit	S	S	S	S	S	S	S	S
Aux 5 control circuit	N	S	S	N	S	S	S	S
Aux 6 control circuit	N	S	S	N	S	S	N	S
Aux 7 control circuit	N	N	S	N	S	S	N	S
Aux 8 control circuit	N	N	S	N	S	S	N	S
Aux 9 control circuit	N	N	N	N	N	N	N	S
Aux 10 control circuit	N	N	N	N	N	N	N	S
Valve 1 control from Aux circuit or solar	S	S	S	S	S	S	S	S
Valve 2 control from Aux circuit	S	S	S	S	S	S	S	S
Valves 1 & 2 control from feature circuit	N	O	O	N	O	O	O	O
Valves 3–5 control from feature circuit	N	O	O	N	O	O	O	O
Macro feature for combining Aux circuits	N	S	S	N	S	S	S	S
Telephone remote control of any one circuit	O	O	O	O	O	O	O	O
24-hour/7-day programming of any circuit	S	S	S	S	S	S	S	S
Count-down timer for any circuit	S	S	S	S	S	S	S	S
SAm®/SAL® color-changing light sync control	S	S	S	S	S	S	S	S
Supports all models of IntelliBrite™ LED pool and spa lights	S	S	S	S	S	S	S	S
Swimming Colors™ & Color-Set™ SAm®/SAL® light control	N	S	S	N	S	S	S	S
Solar heating or heat pump control	O	O	O	O	O	O	N/A	N/A
2-Speed pump control	O	O	O	O	O	O	N/A	N/A
LCD brightness/contrast adjustment	S	S	S	S	S	S	N/A	N/A
L.E.D. indicators with 4 brightness levels	S	S	S	S	S	S	N/A	N/A
Up to 38 Aux circuits, 20 Valve circuits	N	N	O	N	O	O	N	O

S-Standard O-Optional N-Not available N/A-Not applicable

Combine the Magic of Pentair Lighting Systems with the automation of IntelliTouch

One of the most dramatic and enjoyable possibilities with IntelliTouch® is the automation of innovative outdoor and underwater lighting products from Pentair:

- Spectrum Amerlite® (SAm®) automated color pool lighting is the first and brightest fixture for variable color underwater lighting. SAm allows you to bathe your pool in a custom color or slowly roll through the entire color spectrum. With IntelliTouch you can synchronize multiple lights to provide spectacular wall-to-wall color.
- Spectrum Aqualight® (SAL®) automated color spa lighting uses the same revolutionary color technology as SAm in an exclusive compact design for spas.
- FIBERworks® is the most advanced fiber optic pool and landscape lighting system. It offers pool perimeter lighting that hides from view and surrounds your pool with vibrant color or clean, white light. A wide range of landscape fixtures are available to distinctively and economically illuminate your pathways, water features, and other highlights around your yard.

Perhaps the most dramatic marriage of Pentair lighting systems with automation is our lighting animation feature called Swimming Colors™. With IntelliTouch and three or more lighting products mentioned above, you can orchestrate underwater and landscape lighting programs that change color in unique sequences...color literally swims from spa to pool to water feature...or whatever routine your imagination creates.



Learn more about the latest advances in automation technology. Give us a call at 800.831.7133. Also, please visit us online at www.pentairpool.com or www.staritepool.com.

Available from:



 **Pentair Water**
Pool and Spa®

Pentair Pool Products®
800.831.7133
www.pentairpool.com

Sta-Rite®
800.831.7133
www.staritepool.com

pumps / filters / heaters / heat pumps / automation / lighting / cleaners / sanitizers / maintenance products